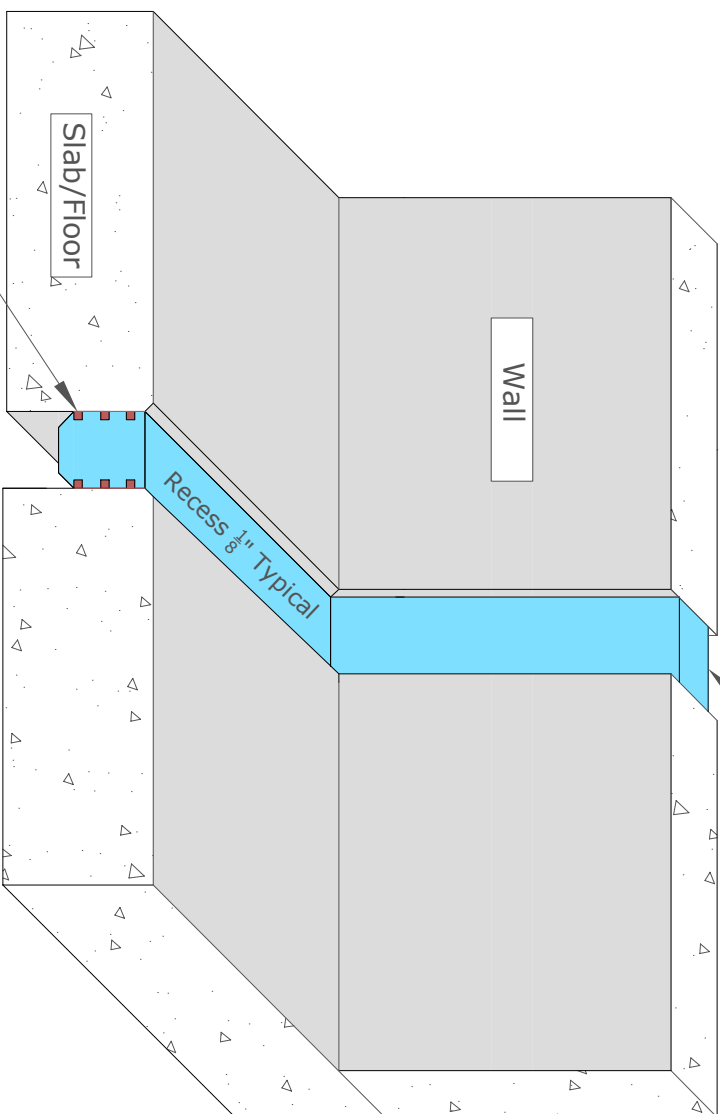


CEVA[®] 100 SYSTEM

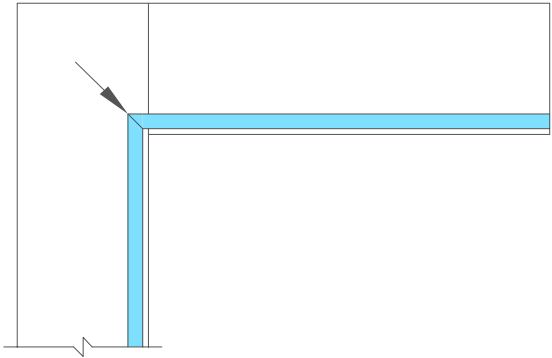
Joint Opening

High Performance Pre-Formed Joint Material



- NOTES:**
- 1) Material is sized based on anticipated movement & season of installation.
 - 2) Material must be installed under compression. Compression amount can vary between 15% and 35% depending on temperature at time of installation.
 - 3) Bonding surface of substrate must be mechanically abraded. Sandblasting is preferred.
 - a) Concrete should be the approx. texture of 100 grit sand paper.
 - b) Steel should be cleaned to SPCC 10 or near white metal. All moisture should be removed from steel prior to installation.
 - c) Contact CCP for installation instructions when bonding to specialty steels such as stainless or galvanized

Bonding Agent Applied To Both The Substrate Surface & Joint Material



Pre-Formed Foam Section At Joint
(Directional Changes, See Welding Detail For Procedure)

Please select a pre-formed Joint Seal and appropriate Bonding Agent based on installation conditions. Please see TDS for assistance in selecting appropriate Bonding Agent

Pre-Formed Joint Sealant	Bonding Agent
Phyzite 380	Eva-Pox Bonder #1
Metazeal	Eva-pox Underwater Bonder #47
Metazeal AJ	Eva-pox Cold Cure Bonder #41



CHASE Construction Products

Drawing #
CCP-001

401 New Kamer Rd.,
Albany, NY 12205
Ph: 518-344-7777, Fax 518-346-1110
www.chasecorp.com

Date: May 15, 2007
Drawn By: Wahab
Checked By: Joel

CEVA 100[®] System

DISTRIBUTED BY:



CANADIAN CONSTRUCTION PRODUCTS
Langley, B.C. Ph: 604-888-7171 ccpcanada.com

CHASE Construction Products details illustrate generic construction guidelines. They are intended for use by the design/construction professionals, to assist in developing project specific details. These should be modified where necessary to accommodate individual project conditions. Contact a CHASE technical professional for assistance with project specific requirements. Always refer to project specifications and local building codes for any special requirements.